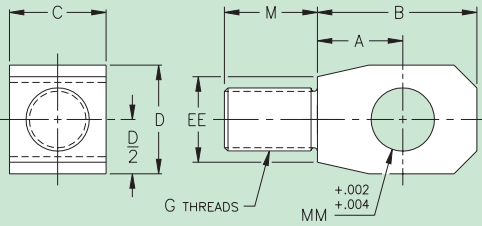


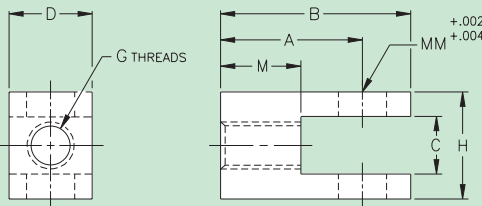
**MALE THREAD ROD**



Material — CRS  
Pin Furnished Upon Request  
At Additional Charge

PART NO.	FOR ROD DIAMETER	Dimensions							
		G	MM	A	B	C	D	M	EE
REM-1007	1	3/4-16	3/4	7/8	1 1/2	1 1/4	1 1/4	7/8	1 1/4
REM-1310	1 3/8	1-14	1 1/4	1 3/8	2 1/2	1 1/2	2 1/4	1 1/4	1 1/2
REM-1712	1 3/4	1 1/4-12	1 3/8	1 1/2	2 3/4	2	2 1/2	1 5/8	2
REM-2015	2	1 1/2-12	1 1/2	1 5/8	3	2 1/4	2 3/4	1 7/8	2 1/4
REM-2518	2 1/2	1 7/8-12	1 3/4	1 7/8	3 1/2	2 3/4	3 1/4	2 3/8	2 3/4
REM-3022	3	2 1/4-12	2	2 1/8	4	3 1/4	3 3/4	2 7/8	3 1/4
REM-3525	3 1/2	2 1/2-12	2 1/2	2 5/8	5	3 3/4	4 3/4	3 3/8	3 3/4
REM-4230	4 1/4	3-12	3	3 1/8	6	4 1/2	5 3/4	4	4 1/2
REM-5740	5 3/4	4-12	3 1/2	3 5/8	7	6	6 3/4	5 1/2	6
REM-7050	7	5-12	4 1/4	4 1/4	8 1/4	7 1/2	8	6 1/2	7 1/2

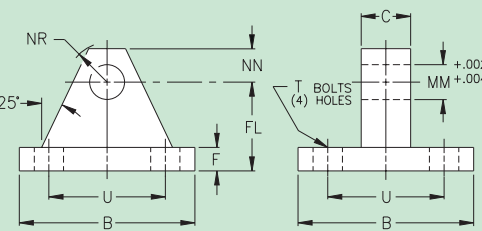
**DOUBLE TONGUE CLEVIS**



Material — CRS  
Clevis pin is included with all double tongue clevises.

PART NO.	FOR ROD DIAMETER	Dimensions							
		G	MM	M	A	B	C	H	D
RCM-1007-10	1	3/4-16	3/4	1 1/8	2	2 5/8	1	2 1/2	1 1/4
RCM-1310-12	1 3/8	1-14	1 1/4	1 1/2	2 7/8	4	1 1/4	3	2 1/4
RCM-1712-12	1 3/4	1 1/4-12	1 3/8	1 7/8	3 3/8	4 5/8	1 1/4	3 1/4	2 1/2
RCM-2015-12	2	1 1/2-12	1 1/2	2 1/8	3 3/4	5 1/8	1 1/4	3 3/4	2 3/4
RCM-2518-15	2 1/2	1 7/8-12	1 3/4	2 5/8	4 1/2	6 1/8	1 1/2	4 1/2	3 1/4
RCM-3022-30	3	2 1/4-12	2	3 1/8	5 1/4	7 1/8	3	6	3 3/4
RCM-3525-25	3 1/2	2 1/2-12	2 1/2	3 5/8	6 1/4	8 5/8	2 1/2	6	4 3/4
RCM-3525-35	3 1/2	2 1/2-12	2 1/2	3 5/8	6 1/4	8 5/8	3 1/2	7	4 3/4
RCM-4230-30	4 1/4	3-12	3	4 3/8	7 1/2	10 3/8	3	7	5 3/4
RCM-4230-45	4 1/4	3-12	3	4 3/8	7 1/2	10 3/8	4 1/2	9	5 3/4
RCM-5740-50	5 3/4	4-12	3 1/2	5 7/8	9 1/2	12 7/8	5	10	6 3/4

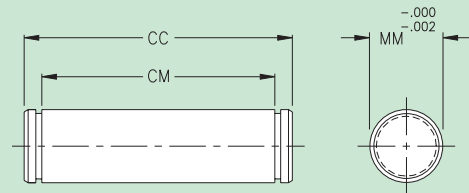
**EYE BRACKET**



Material — CRS  
Welded Construction

PART NO.	FOR SERIES		Dimensions								
	"MT"	"MHH"	MM	C	B	U	FL	F	NN	NR	T
MBM-0710	2	2	3/4	1	3	2.25	1 7/8	5/8	5/8	1	3/8
MBM-1212	3 1/4	3 1/4	1 1/4	1 1/4	5	3.75	3	7/8	1 1/8	1 1/4	5/8
MBM-1312	4	4	1 3/8	1 1/4	6	4.50	3 7/8	1 3/16	1 1/4	1 1/2	3/4
MBM-1512	5	5	1 1/2	1 1/4	7	5.00	4 5/8	1 7/16	1 3/8	1 3/4	1
MBM-1715	6	6	1 3/4	1 1/2	8 1/4	6.00	5 5/8	1 11/16	1 1/2	2 1/4	1 1/4
MBM-2020	8		2	2	10	7.25	6 7/8	1 15/16	1 5/8	2 3/4	1 1/2
MBM-2030		8	2	3	10	7.25	6 7/8	1 15/16	1 5/8	2 3/4	1 1/2
MBM-2525	10 1/12		2 1/2	2 1/2	13 1/4	10.00	8 3/4	1 15/16	2 1/8	2 7/8	1 1/2
MBM-2535		10	2 1/2	3 1/2	13 1/4	10.00	8 3/4	2 3/16	2 1/8	2 7/8	1 3/4
MBM-3030	14 1/16		3	3	15 3/4	12.00	10 1/4	2 3/16	2 5/8	3 1/4	1 3/4
MBM-3045		12	3	4 1/2	15 3/4	12.00	10 1/4	2 7/16	2 5/8	3 1/4	2
MBM-3535	18 1/20		3 1/2	3 1/2	18	14.25	11 1/4	2 7/16	3	3 3/4	2
MBM-3550		14	3 1/2	5	18	14.25	11 1/4	2 7/16	3	3 3/4	2

**CLEVIS PIN**



PINS FURNISHED WITH SNAP RINGS ON BOTH ENDS  
MATERIAL:  
GROUND & POLISHED STEEL  
CHROME PLATED

PART NO.	PIN TO SUIT			Dimensions		
	MT	MHH	CLEVIS	MM	CC	CM
CPM-0732	2	2	X	3/4	3 1/4	2 1/2
CPM-1237	3 1/4	3 1/4	X	1 1/4	3 3/4	3
CPM-1340	4	4	X	1 3/8	4	3 1/4
CPM-1547	5	5	X	1 1/2	4 3/4	3 3/4
CPM-1755	6	6	X	1 3/4	5 1/2	4 1/2
CPM-2060	8			2	6	5
CPM-2070		8	X	2	7	6
CPM-2570	10 1/12		X	2 1/2	7	6
CPM-2580		10	X	2 1/2	8	7
CPM-3085	14 1/16		X	3	8 1/2	7
CPM-30105	18 1/20	12	X	3	10 1/2	9
CPM-35115		14	X	3 1/2	11 1/2	10

**SPECIFY DESIRED  
ACCESSORY PART NUMBER  
ON PURCHASE ORDER.**

**CONSULT "LYNAIR" FOR  
PRICE INFORMATION.**

**ALL ACCESSORIES ARE  
SUBJECT TO NORMAL  
QUANTITY DISCOUNTS.**

**CONSULT "LYNAIR" IF  
NON-STANDARD ITEM  
IS REQUIRED.**