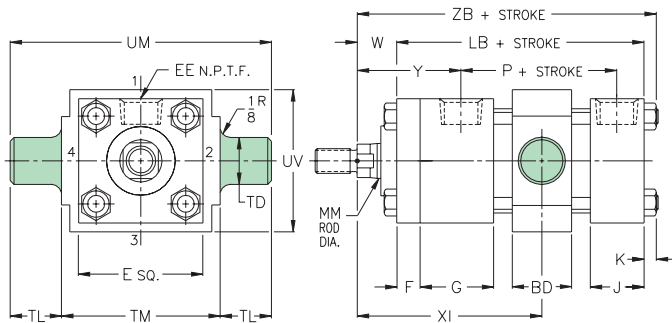
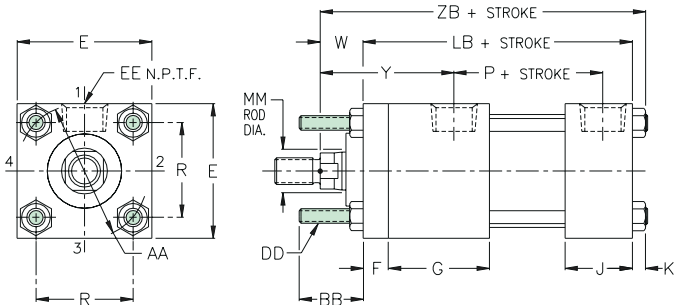


**INTERMEDIATE TRUNNION  
MT.**



Customer must specify "XI" dimension. Mounting pin position limited by trunnion ring clearance with cylinder end caps.

**EXTENDED TIE ROD MOUNT  
MODEL "L" NFPA STYLES MX1, MX2, &**



Specify on order which tie rods are to be extended.

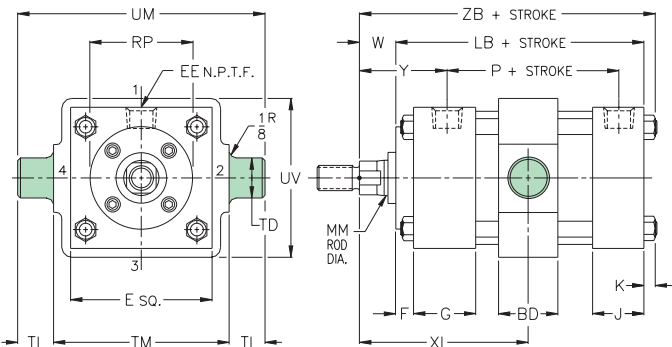
STYLE MX1  
Tie rods extended  
on both ends.

STYLE MX2  
Tie rods extended  
on Rear Head end.

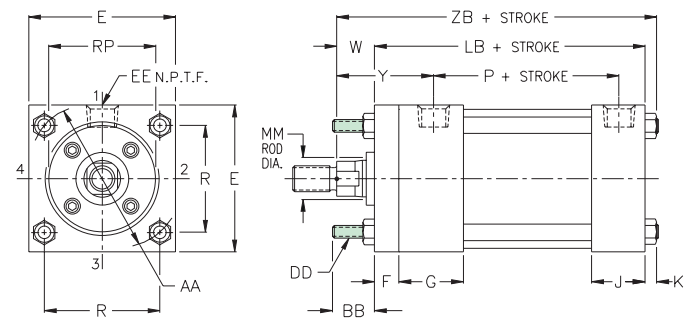
STYLE MX3  
Tie rods extended  
on Front Head end.

STYLE MX0  
Plain mounting style.  
No tie rods extended.

BORE	E	EE	F	G	J	K	P	R	LB	AA	BB	DD	TD <sup>+0.000</sup> <sub>-.002</sub>	TL	TM	UM	UV	BD
1 1/2	2	3/8	3/8	1 1/2	1	1/4	27/32	1.43	4	2.02	1	1/4-28	1.000	1	2 1/2	4 1/2	2 1/2	1 1/4
2	2 1/2	3/8	3/8	1 1/2	1	5/16	27/32	1.84	4	2.60	1 1/8	5/16-24	1.000	1	3	5	3	1 1/4
2 1/2	3	3/8	3/8	1 1/2	1	5/16	2 11/32	2.19	4 1/8	3.10	1 1/8	5/16-24	1.000	1	3 1/2	5 1/2	3 1/2	1 1/4



Customer must specify "XI" dimension. Mounting pin position limited by trunnion ring clearance with cylinder end caps.



Specify on order which tie rods are to be extended.

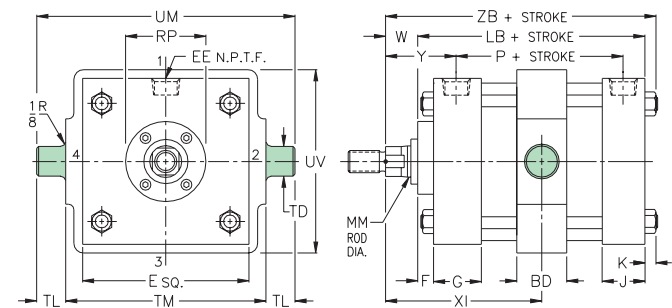
STYLE MX1  
Tie rods extended  
on both ends.

STYLE MX2  
Tie rods extended  
on Rear Head end.

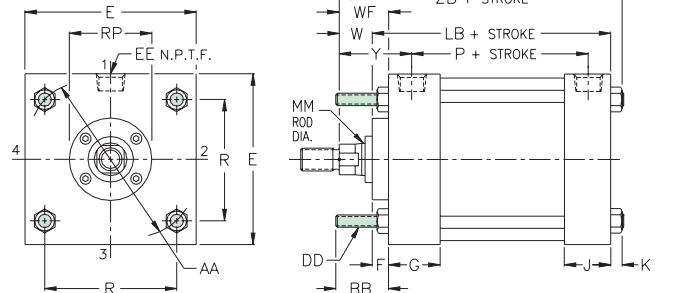
STYLE MX3  
Tie rods extended  
on Front Head end.

STYLE MX0  
Plain mounting style.  
No tie rods extended.

BORE	E	EE	F	G	J	K	P	R	LB	AA	BB	DD	TD <sup>+0.000</sup> <sub>-.002</sub>	TL	TM	UM	UV	BD
3 1/4	3 3/4	1/2	5/8	1 3/4	1 1/4	3/8	2 5/8	2.76	4 7/8	3.90	1 3/8	3/8-24	1.000	1	4 1/2	6 1/2	4 1/4	1 1/2
4	4 1/2	1/2	5/8	1 3/4	1 1/4	3/8	2 5/8	3.32	4 7/8	4.70	1 3/8	3/8-24	1.000	1	5 1/4	7 1/4	5	1 1/2
5	5 1/2	1/2	5/8	1 3/4	1 1/4	7/16	2 7/8	4.10	5 1/8	5.80	1 13/16	1/2-20	1.000	1	6 1/4	8 1/4	6	2
6	6 1/2	3/4	3/4	2	1 1/2	7/16	3 1/8	4.88	5 3/4	6.90	1 13/16	1/2-20	1.375	1 3/8	7 5/8	10 3/8	7	2



Customer must specify "XI" dimension. Mounting pin position limited by trunnion ring clearance with cylinder end caps.



Specify on order which tie rods are to be extended.

STYLE MX1  
Tie rods extended  
on both ends.

STYLE MX2  
Tie rods extended  
on Rear Head end.

STYLE MX3  
Tie rods extended  
on Front Head end.

STYLE MX0  
Plain mounting style.  
No tie rods extended.

BORE	E	EE	F	G	J	K	P	R	LB	AA	BB	DD	TD <sup>+0.000</sup> <sub>-.002</sub>	TL	TM	UM	UV	BD
8	8 1/2	3/4	3/4	2	1 1/2	9/16	3 1/4	6.44	5 7/8	9.10	2 5/16	5/8-18	1.375	1 3/8	9 3/4	12 1/2	9 1/2	2 1/4
10	10 5/8	1	3/4	2 1/4	2	1 1/16	4 1/8	7.99	7 1/8	11.30	2 11/16	3/4-16	1.750	1 3/4	12	15 1/2	11 3/4	2 1/2
12	12 3/4	1	3/4	2 1/4	2	1 1/16	4 5/8	9.62	7 5/8	13.60	2 11/16	3/4-16	1.750	1 3/4	14	17 1/2	13 3/4	2 1/2
14	14 3/4	1 1/4	3/4	2 3/4	2 1/4	3/4	5 1/2	11.38	8 7/8	16.10	3 3/16	7/8-14	2.000	2	16 1/4	20 1/4	16	3