

Series "AJ" models are Series "A" air cylinders modified to include an external adjustable screw component that allows the stroke length to be changed by altering the retracted position of the piston rod.

Wrench flats are provided to aid in making screw adjustments and a lock nut is included to secure position settings.

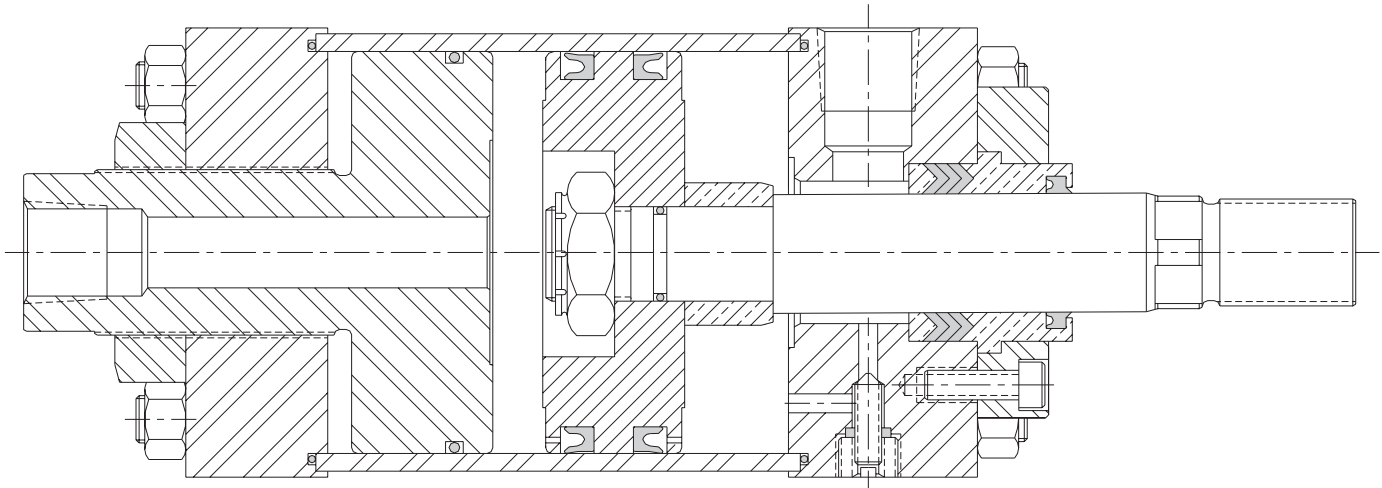
The blind end port passes through the center of the adjusting screw to conserve air by limiting usage to that volume necessary for operation of the effective stroke.

CUSHION OPTIONS

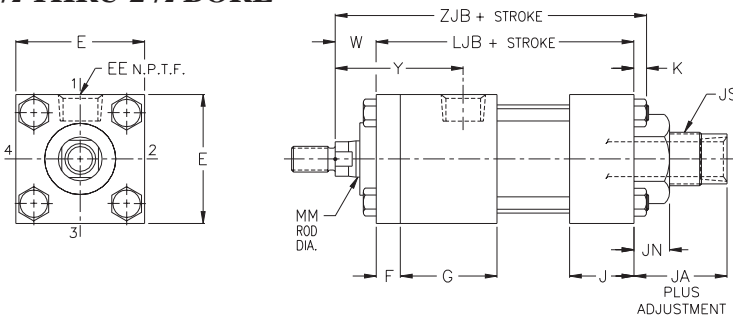
Series "AJ" cylinders are available as non-cushioned or with a rod end cushion only as standard order options.

A non-adjustable blind end cushion may be ordered on a special basis if so desired.

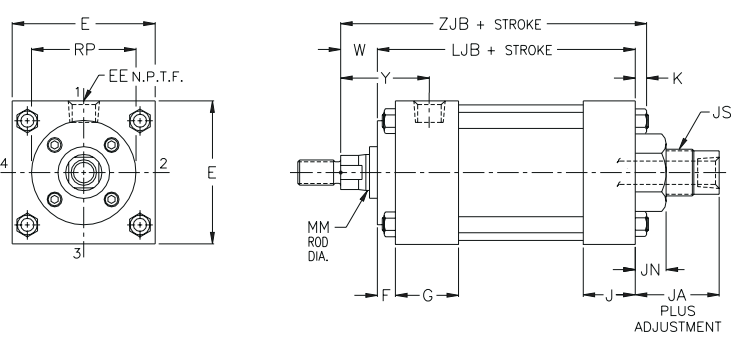
Internal construction modifications are necessary to provide this feature, the cost of which exceeds that of the normal cushion adder. Price information for this special construction option is available upon request.



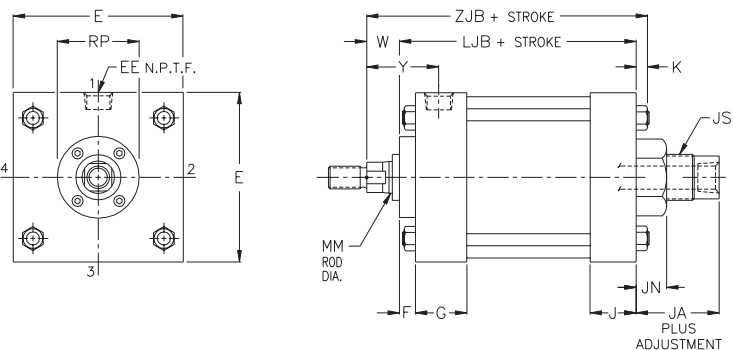
1 1/2 THRU 2 1/2 BORE



3 1/4 THRU 6 BORE



8 THRU 14 BORE



AVAILABLE MOUNTING STYLES

Series "AJ" cylinders are available in the following mounting styles: A, K, C, P, E, F, N, L (type MX3 only), and G.

Refer to Series "A" section for applicable mounting dimensions.

While Series "AJ" and "A" cylinders share common dimensions, the stroke adjusting feature adds length to the body of these cylinders. This added length affects those models which utilize the rear head for mounting purposes. The difference between letter dimensions "LJB" (Ser. "AJ") and "LB" (Ser. "A") is the amount that must be added to mounting dimensions that are measured between points on both ends of Models A, K, F, and G.

ENVELOPE DIMENSIONS						
LETTER DIM.	CYLINDER BORE					
	1 1/2	2	2 1/2	3 1/4	4	5
E	2	2 1/2	3	3 3/4	4 1/2	5 1/2
EE	3/8	3/8	3/8	1/2	1/2	1/2
F	3/8	3/8	3/8	5/8	5/8	5/8
G	1 1/2	1 1/2	1 1/2	1 3/4	1 3/4	1 3/4
J	1	1	1	1 1/4	1 1/4	1 1/4
K	1/4	5/16	5/16	3/8	3/8	7/16
JA	1 1/2	1 1/2	2	2 1/2	2 1/2	2 1/2
JN	5/8	3/4	7/8	1	1	1 1/8
JS	1-8	1 1/4-7	1 1/2-6	1 3/4-5	1 3/4-5	2-4 1/2
LJB	5 1/8	5 1/8	5 3/8	6 1/8	6 1/8	6 5/8

LETTER DIM.	CYLINDER BORE				
	6	8	10	12	14
E	6 1/2	8 1/2	10 5/8	12 3/4	14 3/4
EE	3/4	3/4	1	1	1 1/4
F	3/4	3/4	3/4	3/4	3/4
G	2	2	2 1/4	2 1/4	2 3/4
J	1 1/2	1 1/2	2	2	2 1/4
K	7/16	9/16	1 1/16	1 1/16	3/4
JA	2 3/4	3	3 1/8	3 1/8	3 1/4
JN	1 1/4	1 1/2	1 5/8	1 5/8	1 3/4
JS	2 1/4-4 1/2	2 1/2-4	2 3/4-4	2 3/4-4	3-4
LJB	7 1/4	7 1/2	9 1/4	10 1/4	12